

# PATHWAYS

CIRCLE OF SAFETY • PATH TO HEALING



WOMEN'S RESOURCE CENTER  
OF NORTHERN MICHIGAN, INC.

ANNUAL REPORT 2021-22

# PATHWAYS

CIRCLE OF SAFETY • PATH TO HEALING

**Women's Resource Center of Northern Michigan** creates a circle of safety for survivors and a pathway to:

- healing and thriving for adult and child survivors via the 24/7 helpline and counseling, advocacy and support groups (now also accessible virtually)
- secure housing when one's home is no longer a safe place to live
- improved self-sufficiency by empowering individuals through educational and employment advising, career exploration and financial scholarships
- awareness and prevention of gender-based violence through community education and prevention
- pre-literacy and social skills for children via developmentally appropriate learning experiences
- affordable goods at our Gold Mine Resale Shops

We are humbled and honored that individuals bearing the heaviest of burdens and navigating overwhelming obstacles persevere and find their way to WRCNM. We are amazed at their courage and resilience in seeking out a pathway to healing, safety and empowerment. No matter if the journey takes days, weeks, months or years – we are here to help.



*Gail Kloss*

Gail Kloss  
Executive Director

**We'll keep fulfilling this path**  
Until the world goes still to say:  
Where there's will, there's women  
And where there's women  
There is always a way.  
~ Amanda Gorman, Poet



## IN THEIR OWN WORDS: A PATHWAY TO A MORE POSITIVE FUTURE

*"Women's Resource Center of Northern Michigan has been a source of strength, support and comfort to me. I am so thankful."*

~ Domestic Abuse Program Participant

*"I feel so incredibly blessed to have found support here. I look forward to each session and feel uplifted and my soul filled afterwards."*

~ Counseling Services Participant

*"Thank you for all the ways you helped our son grow during the past two years. We are forever grateful we found the CLC and the amazing staff/teachers that cared for him."*

~ Children's Educational Program Participant

*"My daughter loves playgroup. It's been a great opportunity to get her out of the house and for me to meet other caregivers/parents in my community."*

~ Playgroup Participant



# PROGRAMS & SERVICES

*A path to healing, well-being and empowerment through vital services*



## 782

### HELPLINE CALLS ANSWERED

Many journeys to a more positive future begin with a call to the 24-hour help and information line. Trained advocates answer questions, ensure each caller is safe and provide support and resources. The 24/7 line remained a pathway to support amid staffing and pandemic-related challenges. Technology updates to the agency's phone system have created an improved process for callers to access support.

## 380

### INDIVIDUALS UTILIZED COUNSELING AND ADVOCACY

Working with WRCNM Therapists and Advocates, courageous survivors reclaimed control in their lives and took steps toward personal growth and empowerment. During the past year, we have continued to fine-tune virtual services, creating another pathway to support for domestic abuse and sexual assault survivors who face barriers that make it difficult or impossible to come into the office for an appointment.

## 2,174

### NIGHTS OF SHELTER AT THE SAFE HOME

The Safe Home creates a positive path to safety for women determined to rise above the physical and emotional pain of domestic abuse and sexual assault. This year, 84 women and children at the shelter were provided with more than 6,500 meals and all daily needs. Additionally, 15,557 nights of housing were provided for those in the Transitional Supportive Housing Program. A newly installed generator at the Safe Home ensures families are safe and comfortable during power outages. Amazingly, the Safe Home remained operational and accessible seven days a week, 365 days a year, amid staff shortages and issues related to the pandemic.

## 114

### SEXUAL ASSAULT SURVIVORS SUPPORTED

The path to healing, hope and empowerment is different for each adult and child survivor of sexual assault. Counseling, advocacy and therapeutic services are provided at any point during a survivor's journey: in an immediate response or the days, months or years after a traumatic experience.



# PROGRAMS & SERVICES

*A path to healing, well-being and empowerment through vital services*



## 154

### PLAYGROUP FAMILIES

Playgroup enjoyed a return to normalcy this year after many months of accommodations related to the pandemic. Families were grateful and eager to gather again in a place of support, safety and sharing. MSU Extension visited groups to share childhood development resources and a new book for each child. Dental Clinics North's visit included complimentary toothbrushes and information on oral health guidelines for children and pregnant women.



## 79

### STUDENTS ENROLLED

WRCNM provides educational programming and a path forward for young students to learn, grow, and interact at the Children's Learning Center and WRCNM Preschool (a Great Start to Readiness Program). Safety upgrades made to the retaining walls around the Children's Learning Center outdoor play area and parking area improve safety for students and family members. A Michigan Department of Education Child Care Sustainability Grant provided funding to help stabilize operations, support the health and safety of children and staff and focus on what matters most -- supporting children and families.



**Children's Learning Center** maintains a 5-star Great Start to Quality rating for licensed programs in Michigan!



## \$91,716

### EDUCATIONAL SCHOLARSHIPS

Educational and Employment Services supported 172 individuals on their path to empowerment and greater financial stability, with career exploration, job search assistance, academic advising and financial assistance; 17 program participants graduated from college in spring 2022. Students in need of clinical uniforms and work-based learning professional clothing received \$1,569 in Working Wardrobe vouchers. Additionally, 14 children impacted by domestic abuse were supported with \$5,000 in scholarships for extracurricular activities, such as sports, dance, music and school trips via the Women's Independence Scholarship Program.



***"Receiving this scholarship has made it so much easier to focus on school instead of worrying about how to pay for it. If I ever have the chance to donate back as a college graduate, I will be sure to do so."***

*~ Educational and Employment Services Participant*



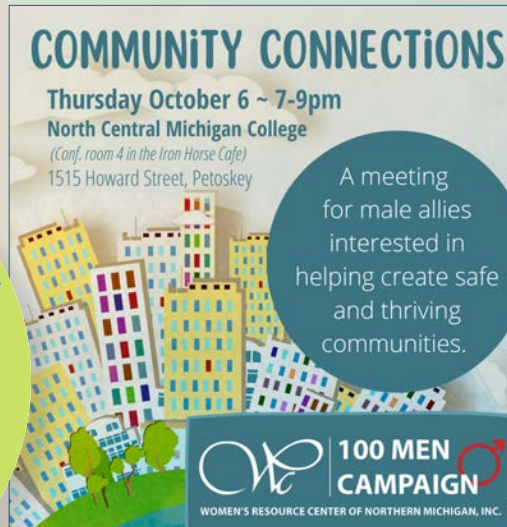
# PROGRAMS & SERVICES

*A path to healing, well-being and empowerment through vital services*



## SEXUAL VIOLENCE PREVENTION

Sexual Violence Prevention (SVP) worked with a group of men in the community to create and distribute a guide on establishing individualized “cultural fundamentals” to help businesses, organizations, and service groups create trusting and respectful environments free from abusive language and behavior. The result is improved communication and employee morale/retention. SVP also developed and piloted a toolkit for schools and educators to use with middle/high school students with short lessons and activities that address bullying, respect, media influences, mindfulness and technology/digital respect. The purpose of the toolkit is to provide an option for educators to engage their students on topics of social/emotional wellbeing, as well as increase students’ feelings of connectedness to their classmates, teachers and school. The flexibility of the toolkit allows educators to address specific classroom issues or introduce topics to be a part of their class environment.



## \$5,507 IN GOLD MINE RESALE SHOP VOUCHERS

The sale of donated goods at these two busy stores provided more than 28% of the agency’s total operating budget this year, helping fund vital WRCNM programs and services. Gold Mine Shops also provided \$5,507 in store vouchers to survivors, WRCNM program participants and community members experiencing challenging situations. Improvements were made to the main entrances at both stores, and credit card machines were updated to facilitate faster customer transactions. Although the stores experienced staffing shortages, dedicated staff stayed the course to help carry out WRCNM’s mission.

**“After years of visiting this store, it’s still a perfect gem! ALWAYS clean, a flawless job everyone!”**

*~ Gold Mine Shop  
5- star Google Review*



# TOGETHER

*It takes a community to create a circle of safety*

**Safe Home Harvest Food and Supply Drive** donations nourish and comfort individuals and families seeking refuge from domestic abuse and sustain them on their healing journey.

**WRCNM Holiday Families** donations touch the hearts of dozens of families, providing them with a much-needed pause from challenges and uncertainties.

**Volunteers** help us focus on the important work to be done by serving on the Board of Directors, fundraising committees and volunteering with WRCNM programs.

**Support of annual fundraisers and benefits** raises dollars to ensure the continuation of vital WRCNM programs and services relied on by thousands of people every year.

**Gold Mine Resale Shop donors and patrons** make a positive impact because 100% of store proceeds support lifesaving and life-changing WRCNM services. The stores also provide thousands of dollars in store vouchers for those in need and a place to purchase affordable goods.

**100 Men Campaign contributors** take a public stand to help end violence against women and children, and local men attending Community Connections discussion groups better understand their role in this effort as positive role models.



## IN THEIR OWN WORDS: A PATHWAY TO A MORE POSITIVE FUTURE

*"I'm passing all my classes with A's and one B. I never thought I would have made it through with good grades, especially while having two little ones. I just didn't want to give up, and knowing that I had support has made a huge impact and I appreciate it more than anything."*

*~ Educational and Employment Services Participant*

*"My WRCNM Advocate makes me feel comfortable and shows great care and respect for what has been going on in my life for 33 years –an abusive relationship. I look forward to our meetings and getting my life back; being strong and positive about my life."*

*~ Domestic Abuse Services Participant*

*"I am truly grateful to have a safe space to heal and grow, and for everything TSH does and all the opportunities given. It helps a lot having guidance and information, and most importantly, people you trust. Thank you for all you do."*

*~ Transitional Supportive Housing Participant*

*"They have two locations. I absolutely love this place. I always find so much awesome stuff. Very good quality and prices."*

*~ Gold Mine Resale Shop 5-star Google Review*

# TOGETHER

*We create new paths to keep the mission flame burning*

**Women Can/Women Do** events across four venues raised more than \$210,000 for programs and services.

**WRCNM donors** demonstrated they continue to care deeply about the agency's mission with an increase in the size of gifts in 2022, providing critical funding during uncertain economic times.

**Amazon Web Services** provided grant dollars for STEM education in the Children's Learning Center (CLC) and Preschool classrooms, scholarship funds for Educational and Employment Services students, and financial support for the Safe Home and 24/7 helpline. The grant was awarded in partnership with a CLC parent and Amazon employee who recommended WRCNM for the Innovation in Diversity and Equity grant.

**Annual supportive grants** help us continue to create pathways to healing, safety and empowerment, from Petoskey Harbor Springs Area Community Foundation, Charlevoix County Community Foundation, Cheboygan County Community Foundation, and Otsego Community Foundation.



## BOARD OF DIRECTORS 2021-22

*Community leaders who volunteer to serve on the Board of Directors anticipate obstacles, act as a compass in fiscal and policy matters and help navigate the path forward.*



**Maggie Kromm, President**  
**Melanie LaFave, Vice-President**  
**Annette Eustice, Treasurer**  
**Linda Burnham, Secretary**



**Mary Catherine Hannah**  
**Deb Kiteley**  
**Lindsay Steffes**  
**Erika Van Dam**

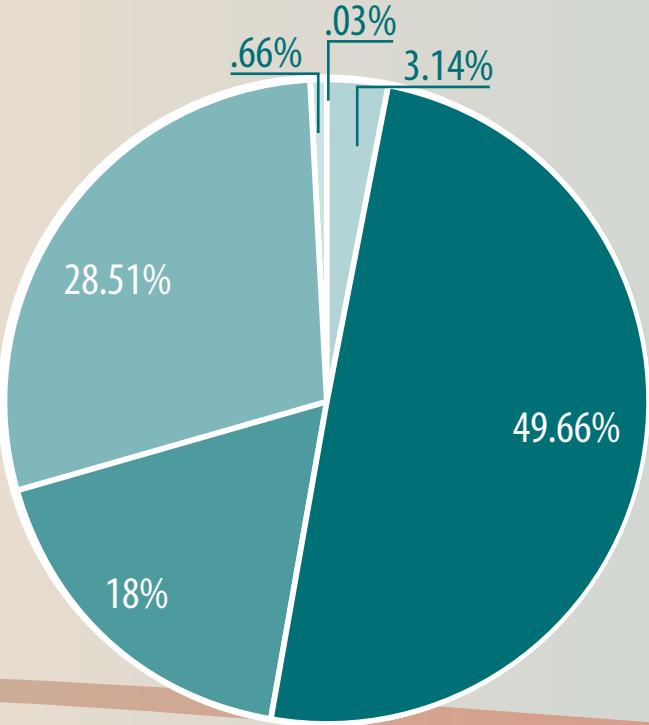


# INCOME & EXPENSE statement

Period ending September 30, 2022

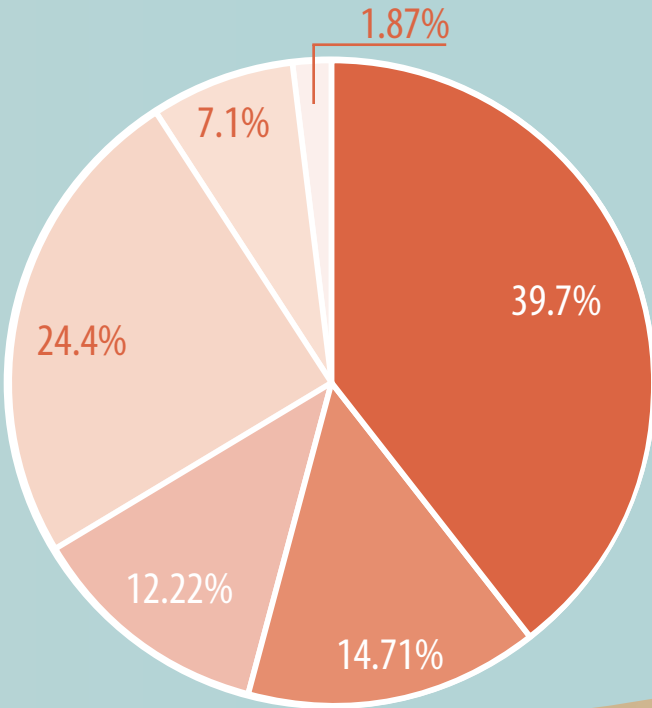
## Revenue 2022

Grants and Contracts (49.66%)	\$2,035,940
Sales, Gold Mine Resale Shops (28.51%)	1,168,746
Contributions and Fundraising (18%)	737,961
Children's Learning Center Tuition (3.14%)	128,688
Other Revenues (.66%)	27,184
Investment Income (.03%)	1,420
<b>Total Support and Revenues</b>	<b>\$4,099,939</b>



## Expenses 2022

Domestic Violence Services ( 39.7%)	\$1,659,292
Sexual Assault Services and Prevention (14.71%)	614,636
Children's Educational and Care Services (12.22%)	510,727
Gold Mine Resale Shops (24.4%)	1,019,885
Management and General Operations (7.1%)	296,630
Fundraising (1.87%)	77,965
<b>Total Expenses</b>	<b>\$4,179,135</b>





## MISSION

Women's Resource Center of Northern Michigan is committed to equality, justice and the well-being of women.

To that end, we will engage our community and encourage all to work with us toward those goals.

## VALUES

- Eliminating the culture of violence
- Quality programs and services
- Understanding and respecting our diversity
- Advocacy for those in need
- Leadership in our community
- Integrity in all we do
- Taking action for social change
- Yielding positive results

## VISION

To be recognized as leaders for social change and respected as a strong voice for women, children and families. Our community will see us as an inclusive organization known for excellent services, effective programs and a dedicated staff. We will be responsible stewards and operate a fiscally sound organization, encouraging others to see us as a worthy investment and valuable community asset.



**WOMEN'S RESOURCE CENTER  
OF NORTHERN MICHIGAN, INC.**

**Main Office:** 423 Porter Street, Petoskey, MI 49770  
(231) 347-0067 • [info@wrcnm.org](mailto:info@wrcnm.org) • [wrcnm.org](http://wrcnm.org)

**Satellite Offices:** Cheboygan • Gaylord • Mancelona • North Central Michigan College  
**24-Hour Help and Information Line:** (231) 347-0082 or (800) 275-1995