



STRENGTHENING WOMEN, BUILDING COMMUNITIES.



WOMEN'S RESOURCE CENTER
OF NORTHERN MICHIGAN, INC.

Annual Report
2023-2024

A WORD FROM OUR EXECUTIVE DIRECTOR

Dear Friends,

Women's Resource Center of Northern Michigan (WRCNM) has remained a dedicated source of support, healing, and empowerment for individuals and families affected by abuse and assault. Since 1977, the organization has assisted tens of thousands of people, continually inspired by their resilience and future aspirations.

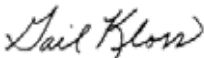
Survivors often carry complex emotions—fear, shame, anger, grief—but with the right support, healing is possible. **WRCNM provides safe, nonjudgmental environments where survivors are met with compassion, understanding, and practical tools for healing.** In these moments of vulnerability, it's the strength and hope within each survivor that can lead to meaningful recovery and a path toward a brighter future.

Last year, WRCNM helped individuals and families with our multitude of programs and services. With your support we provide:

- Domestic Abuse and Sexual Assault Counseling and Advocacy Services
- Educational and Employment Services (EES)
- Children's Learning Center Programming
- Preschool Programming (GSRP)
- Violence Prevention Programming
- 100 Men Campaign
- Speakers and Community Education Services
- Gold Mine Resale Shops
(2 locations)

Each day, we witness the remarkable strength of hope—an unwavering force that uplifts spirits, ignites resilience, and lights the way forward through life's challenges. It's this hope that fuels our mission and reminds us, and our supporters, of the transformative impact we can create together.

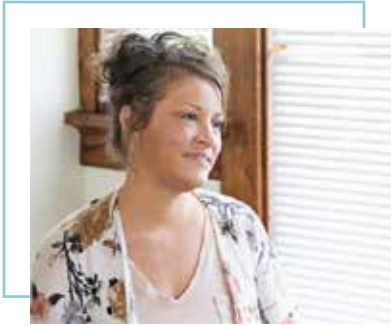
In appreciation,



Gail Kloss
Executive Director

"I felt like I was drowning but WRCNM helped me access resources and opportunities that have opened a new chapter to my life."

~ Survivor



WHAT'S INSIDE

PROGRAMS & SERVICES	4
Domestic Abuse & Sexual Assault Services	4
Counseling Services	6
Children's Advocacy Center	8
Education & Employment Services	10
Violence Prevention	12
Children's Learning Center	14
FUNDRAISING	16
EMPOWERING BRIGHT FUTURES: CAPITAL CAMPAIGN	18
FINANCIALS	19

OUR MISSION

Women's Resource Center of Northern Michigan is committed to equality, justice, and the well-being of women. To that end, we will engage our community and encourage all to work with us toward those goals.



WOMEN'S RESOURCE CENTER
OF NORTHERN MICHIGAN, INC.

DOMESTIC ABUSE & SEXUAL ASSAULT SERVICES

This past year, WRCNM Safe Home completed a huge project replacing beds and cribs with new frames that are engineered for use in shelter settings. These bed frames are powder coated, making them rust-proof, anti-bacterial, and easy to clean. In addition, each sleep surface is rated for up to 400 lbs. The bunk beds are complete with heavy-duty guard rails and metal ladders.

New mattress covers were also part of this major update. The mattress covers are waterproof, wipeable, breathable, stain-resistant, and anti-bacterial. The bed frames and mattress covers are both bed-bug resistant as a preventative measure.



These beds are built to last. They are able to withstand the frequent sanitation that happens at Safe Home, allowing WRCNM to maintain a high level of cleanliness and provide a safe place for survivors to sleep that will last for years to come. These improvements reflect WRCNM's ongoing commitment to providing a safe, efficient, and welcoming space for those who rely on our services. We look forward to continuing our mission with renewed energy.

Staff participated in initiatives to enhance their skills and knowledge:

Two advocates attended Battering Intervention Services Coalition of Michigan's (BISC-MI) Annual 3-day Conference titled Envisage: Expanding Connections, Creativity, and Confidence. They learned about innovative Batterer Intervention Programming that promotes individual participant accountability, models compassion and empathy, and utilizes strategies that foster victim safety, coordinated community responses, and systems change.

Many of the advocates attended a Mental Health First Aid Training provided by Community Mental Health where they learned more about how to recognize signs of mental health or substance use challenges in adults, how to offer and provide initial help, and how to guide a person toward appropriate care if necessary.



IMPACT



1980

nights of housing provided by
WRCNM Safe Home



74

women and children housed



865

callers impacted by Domestic Abuse
or Sexual Assault were supported by
the 24-Hour Help & Information Line

COUNSELING SERVICES

This past year, therapists provided over 160 survivors with individual therapy. All WRCNM therapists have training in one of two evidence-based treatment modalities for children impacted by sexual or domestic abuse. Four therapists are trained in Trauma-Focused Cognitive Behavioral Therapy (TF-CBT) and one therapist is trained in Eye Movement Desensitization and Reprocessing (EMDR). Aided by these modalities, WRCNM therapists have provided services to 54 children (ages 0-17) this last fiscal year. These services support children in addressing, processing, and moving forward from their traumas.

The counseling program has worked closely with our Children's Advocacy Center (CAC) to establish smooth transitions from children and families experiencing Forensic Interviews to have access to therapy services. This year alone, the CAC referred 25 survivors to our therapy program.



In May, WRCNM started a Sexual Assault group that focuses on yoga and connecting survivors back into their bodies.

Yoga can be a wonderful tool for survivors of trauma. It can help survivors reshape their responses to triggers and reduce their symptoms, stress, and anxiety. Yoga can also provide survivors with peace, comfort, and support through yoga therapy groups.

This new offering was attended by 6 survivors throughout this year for a total of 9 sessions.



IMPACT



163

individuals were provided a healing pathway through counseling with Master's-level therapists



ALL

WRCNM therapists have training in one of two evidence-based treatment modalities for children impacted by sexual or domestic abuse



5

individual licensed therapists providing counseling services

CHILDREN'S ADVOCACY CENTER

The WRCNM Children's Advocacy Center (CAC) is comprised of a Forensic Interviewer as well as a Family Advocate.

This past year, the CAC served 122 families. From these families, the CAC staff coordinated referrals to the WRCNM Counseling and Therapy Program for 25 survivors and/or their family members to help connect them directly to WRCNM therapy services.

CAC staff attended the statewide CACMI conference, tabled booths at local events such as CAPE conference and Petoskey's Children Health Fair to highlight services that the CAC can provide, and completed role specific trainings throughout the year.

Our Family Advocate attended the Justice for Children Conference in Detroit, Michigan. This conference was held by Children's Advocacy Centers of Michigan (CACMI) and offered diverse voices, lived experiences, and forward-thinking strategies to address the challenges faced by children in Michigan. WRCNM CAC is committed to providing a high level of support and resources to survivors and their families. Conferences like Justice for Children help us learn, grow, and collaborate with other professionals dedicated to protecting children.

CAC staff also worked closely with CACMI to continue moving forward in the accreditation process and is hopeful to apply for accreditation within the 24-25 fiscal year.

A forensic interview is often the first step in the investigation of suspected child abuse. The forensic interviewer connects with the child to help determine what has happened and what the next steps should be. Often, information collected in these interviews is used to help prosecute crimes against children.



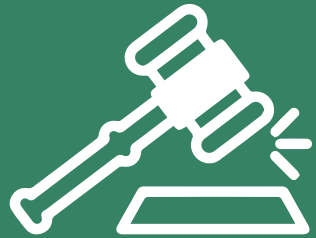


IMPACT



80

Children's Advocacy Center forensic interviews were conducted



38

cases were sent to prosecution
19 of those cases resulted in charges being brought



10

years of age is the average age of survivors at the Children's Advocacy Center

EDUCATIONAL & EMPLOYMENT SERVICES

WRCNM Educational and Employment Services office on the campus of North Central Michigan College (NCMC) served 166 community members this past fiscal year.

A variety of services have been provided, including:

- Assistance with NCMC admissions, navigating scholarship options, and academic planning
- Career guidance and exploration, resume development, and job search assistance
- Financial assistance with NCMC tuition, textbooks, childcare expenses, and supplies
- Financial assistance for professional interview clothing, work clothing, and uniforms
- Financial assistance through WRCNM private scholarships for NCMC educational program expenses including Fast Track Career Programs, University Center programs, and non NCMC education and training expenses (including real estate training/testing, cosmetology courses, and occupational licensing and certification)
- GED scholarships and referral information
- Personal assistance through WRCNM counseling and victim services referrals (on campus appointments available)
- Community resources referral and advocacy

WRCNM offers the Working Wardrobe Program. This program has been extremely well-received and serves NCMC students and community members. Recipients include NCMC students who need clinical uniforms and work-based learning (WBL) professional clothing in addition to community members who need interview and work clothing. Over the past year, the Working Wardrobe Program has served 25 community members (8 NCMC students) with \$2,396 in clothing vouchers.





IMPACT



\$101,084

in educational scholarships facilitated



28

WRCNM-supported students
graduated in May 2024



7

students successfully completed
Fast Track Programs
with WRCNM scholarships

VIOLENCE PREVENTION SERVICES

Gender based violence is a serious social problem. The incidence of interpersonal violence among couples, friends and in dating relationships is staggering. This program explores ways that our community—schools, faith-based institutions, community groups, and individuals—can unite together to take action to stop violence before it begins.

In 2024, we provided programming to Petoskey High School, Lakeview Academy, Round Lake Education Center, and Concord Middle School and High School. Since then, our program has expanded to include even more area schools.

In addition, Respect is Everything classes were conducted at Petoskey High School (PHS), accompanied by the distribution of Respect 101 tool kits at PHS, Lakeview Academy, and Char-Em ISD. These initiatives contribute to a comprehensive approach to violence prevention programming, promoting education and awareness at various levels within the community.

The Askable Adult series encouraged discussions centered on locating reliable resources and the importance of acknowledging gaps in knowledge, emphasizing that seeking information together with your child fosters trust in relationships. This series will continue with virtual and in-person sessions, addressing additional topics based on participants' expressed needs.

Quarterly men's Community Connections events foster dialogue on gender-based violence. Our goal is to create a safe space for participants to actively engage in conversations addressing issues such as negative behavior or language toward women. Led by the attendees themselves, these events have garnered repeat participation, underscoring the value of the space for connection, learning, and personal growth.



Contact Megan King for more information or to schedule an event/presentation:
mking@wrcnm.org



IMPACT



28

school presentations
were given in our 5-county
service area



18

community presentations
were given in our 5-county
service area



900

total individuals were present
for our violence prevention
presentations this FY

CHILDREN'S LEARNING CENTER

Since WRCNM was established in 1977, the Children's Learning Center (CLC) has aligned with the agency's mission and values of supporting women, children, and families. The program grants parents of enrolled children the ability to pursue employment outside the home, confident in the knowledge that their children are nurtured in a caring, empathetic, and structured educational setting.



The program focuses on developmentally-appropriate learning experiences, promoting individuality, and exploring interests while fostering group cooperation and social skills. Additionally, it provides a balanced child care service, ensuring a well-rounded approach to early education.

Professional development initiatives undertaken by the CLC staff:

CLC completed the revalidation process for Great Start to Quality and obtained a published quality level of Demonstrating Quality (which previously was recognized as 5-stars).

Expanded the Great Start Readiness Program (GSRP) with an additional classroom of 8 students. This was in preparation for a much larger expansion of an additional full size classroom for Fall 2025, at our new location.

CLC and WRCNM Preschool programs were awarded a \$43,270 Child Care Sustainability Grant through the Michigan Department of Education. The funds help programs like ours keep the doors open and focus on what matters most – supporting children and families.



IMPACT



54

students were enrolled in WRCNM's
Children's Learning Center



18

students were enrolled in WRCNM's
Great Start to Readiness Program



\$1816

was given by WRCNM in Children's
Learning Center scholarships

FUNDRAISING

Ongoing Support: Beyond Expectations

This year, we continued to receive invaluable support through initiatives like the 100 Men Campaign, the Harvest Food and Supply Drive, and the Holiday Families program, each contributing significantly to our mission.



Gold Mine Resale Shops: Heartfelt and Purposeful

The income from our bustling resale shops continued to play a vital role in supporting the agency's annual budget, directly funding essential programs and services. Thanks to the commitment of our staff, the dedication of our volunteers, and the generosity of our donors, the shops remained well-stocked with a constantly rotating selection of antiques, furniture, clothing, household items, and even brand-new goods with tags—ensuring a vibrant shopping experience that supports our mission.



Volunteers: The Heart of Our Mission

Volunteers continued to be indispensable, making a meaningful impact across all areas of our work. Their dedication was felt in the daily operations of the Gold Mine Resale Shops, on the 24-hour Help and Information Line, and in the compassionate support offered to families at the Safe Home. Volunteers also played vital roles in facility maintenance, on fundraising committees, and through service on our Board of Directors. Their time, talents, and heart make all the difference.



Fundraising Events: Powered by Community Spirit

Our fundraising events—especially the Women Can/Women Do luncheons—received outstanding support from our community. Generous contributions from individuals and businesses, silent auction donations, event sponsorships, and the tireless efforts of our volunteers all played a key role in the success of these events. From the bottom of our hearts, thank you for making a lasting impact.

EMPOWERING BRIGHT FUTURES: CAPITAL CAMPAIGN

WRCNM is thrilled to enter a new chapter as we expand our facilities and services for our beloved community. This new space will provide us with the opportunity to reach more individuals, enhance our impact, and offer vital support to those who need it most. Our work on the new project is still in progress as we enter the final phase of our capital campaign. To bring this vision to life, we are seeking the support of valued partners like you.

PROJECT EXPENSES

Building and Renovations	\$3,050,000
State-of-the-art Security	\$175,000
Technology	\$115,000
Trauma-informed Interior Design	\$275,000
Children’s Outdoor Play Area	\$500,000
Sustainable Hardscaping and Landscaping	\$220,000
Campaign Expenses	\$210,000
Contingency	\$455,000
<hr/>	
WRCNM commitment	\$1,000,000
Total Capital Campaign Goal	\$5,000,000

Some costs are estimates pending detailed vendor confirmation.

Your continued contributions are vital in ensuring that our new space will truly reflect the growth, collaboration, and impact we envision. Your involvement not only helps us create a space that supports the community but will also set the foundation for future success and lasting connections.



Scan the QR code to donate securely from your phone. Let us help you plan the most impactful gift that meets our shared vision. WRCNM accepts gifts in many forms, including gifts made through donor-advised funds and private foundations, as well as long-term appreciated securities such as stock, bonds, and mutual funds.

FINANCIALS

Transparency and accountability are central to the mission of WRCNM.

Each dollar we receive helps support vital programs and services for individuals and families in our community. We are committed to the impactful use of all funding. **WRCNM has a reputation for responsible and effective fiscal management of a multi-million dollar budget.** Agency policies and funder compliance requirements guide procedures and activities.

Our annual budget is funded through a diverse range of sources that include, but are not limited to:

- Public and private grants
- Individual donations
- Planned/estate gifts
- Gold Mine Resale Shop revenue
- State and federal grants

A detailed breakdown of our expenses and revenue for the 2023–2024 fiscal year is available on our website at wrcnm.org. You'll also find access to our Tax ID and IRS Form 990 filings to ensure full transparency. A financial summary is also included in the digital version of this annual report, accessible on our website. *A complete set of financial statements is available for review at the WRCNM Main Office for those who wish to explore further.*

We are deeply grateful for the continued support from donors, partners, and community members who make our work possible.

FY Period ending September 30, 2024

Annual Report 2023-2024

Main Office

2225 Summit Park Drive
Petoskey, MI 49770
(231) 347-0067

Satellite Offices

Cheboygan
Gaylord
Mancelona
North Central MI College

24-Hour Help and Information Line

(231) 347-0082
(800) 275-1995



MISSION

Women's Resource Center of Northern Michigan is committed to equality, justice, and the well-being of women. To that end, we will engage our community and encourage all to work with us toward those goals.

VISION

To be recognized as leaders for social change and respected as a strong voice for women, children, and families. Our community will see us as an inclusive organization known for excellent services, effective programs, and a dedicated staff. We will be responsible stewards and operate a fiscally-sound organization, encouraging others to see us as a worthy investment and valuable community asset.

VALUES

Eliminating the culture of violence
Quality programs and services
Understanding and respecting our diversity
Advocacy for those in need
Leadership in our community
Integrity in all we do
Taking action for social change
Yielding positive results